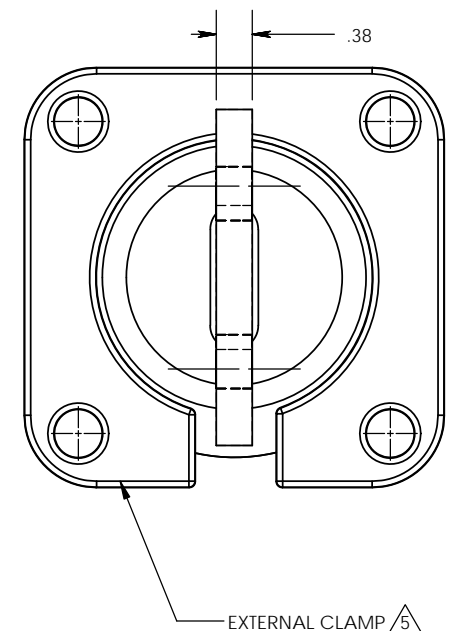
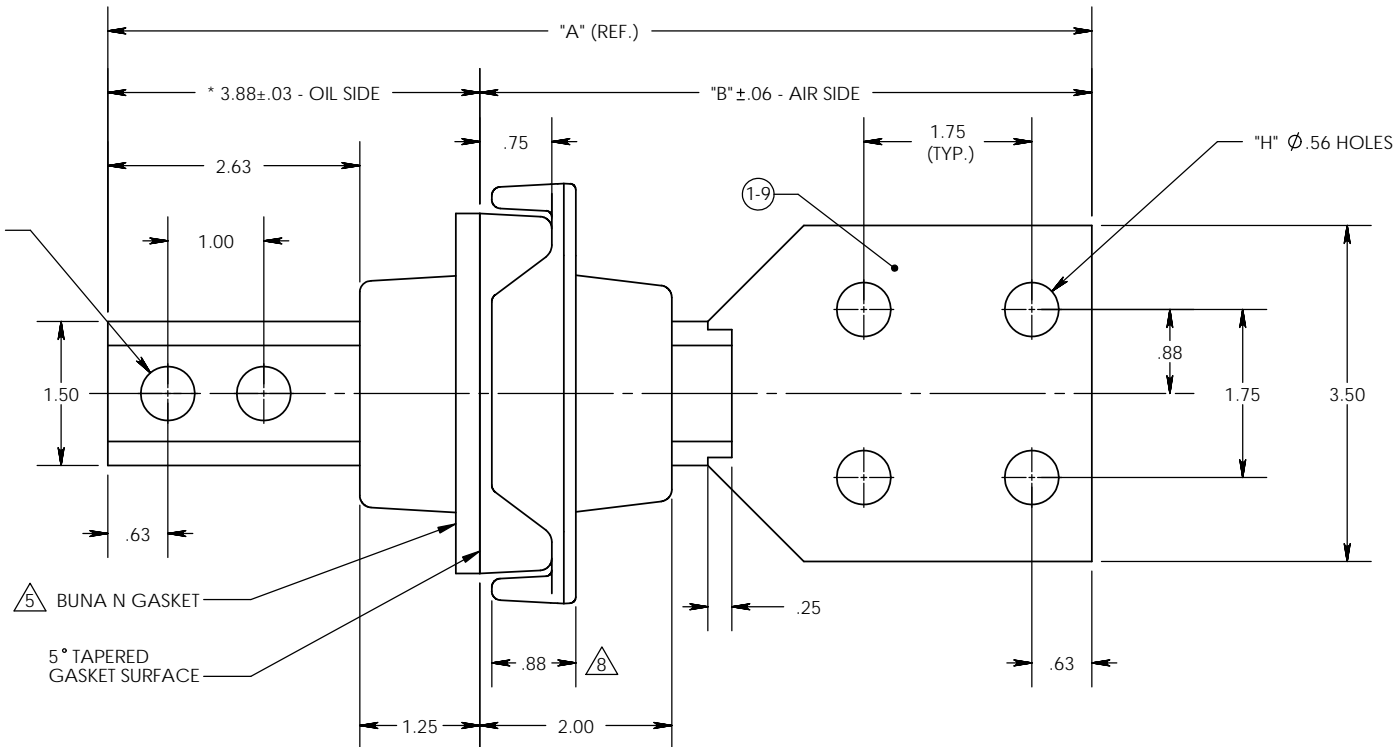
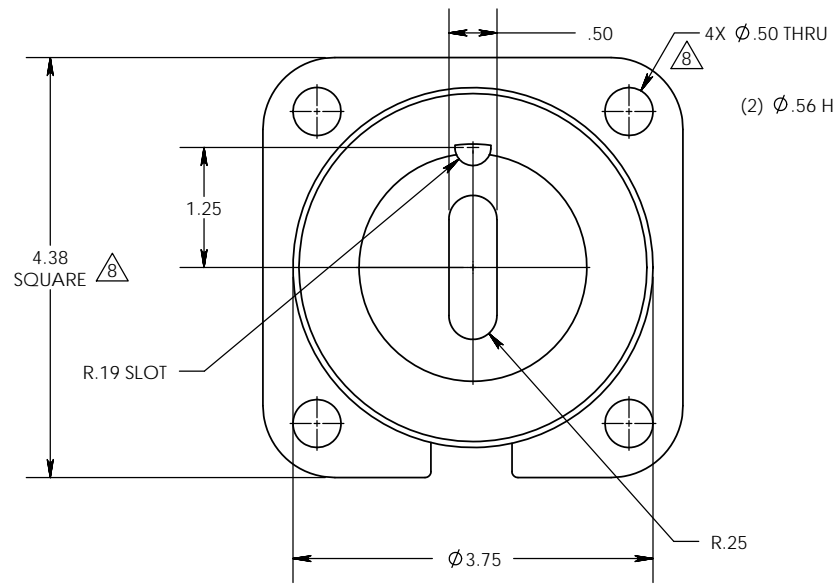
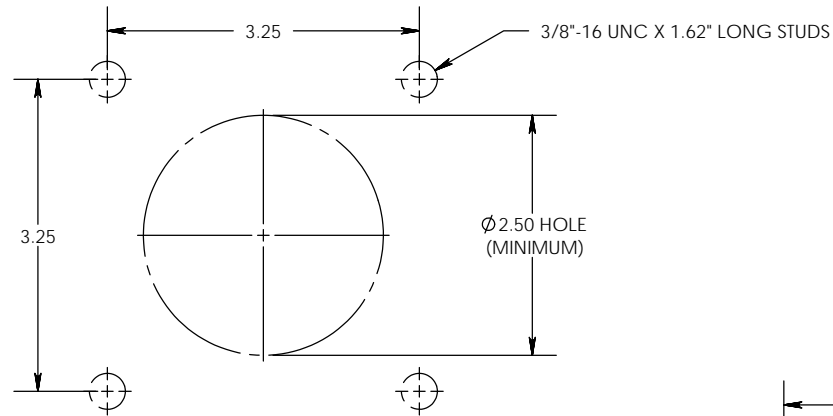


RECOMMENDED MTG. DETAIL



REVISIONS					
REV.	DATE	ECN#	DESCRIPTION	BY	APPROVED
1	8/31/00		ADDED MOUNTING DETAIL	DB	
2	3/1/03		CHANGE DWG. FORMAT	RM	DB
3	6/14/04		ADDED SLOT TO 1/2" X 1 1/2" STUD	RM	DB
4	6/21/2011		ADDED DIMS. & PART NUMBERS TO TABLE.	CJT	PM
5	2/11/2013	PQI 9373	ADDED GA-0118-00 & CO-5074-01P.	BS	SMM
6	11/22/2013	HJ13-295	ADDED MOUNTING DETAIL	CLS	BLB
7	2/25/2015	HJ15-046	ADDED CYCLOALIPHATIC EPOXY GRAY TO MATERIAL LIST	TJF	BLB
8	5/28/2020	HJ20-144	ADDED DIMENSIONS TO CLAMP & UPDATED EPOXY TEMPERATURE RANGES	CLS	LO

- NOTES:
- ALL UNSPECIFIED RADII TO BE R0.125
  - ALL CONTACT SURFACES TO BE CLEAN & FREE FROM FLASH.
  - RATINGS BASED ON SIDE MOUNTED BUSHINGS WITH OIL IMMERSIED SHANK AND SUITABLE TERMINATION AND LEAD CONNECTIONS.

- MATERIAL:
- BISPHENOL-A EPOXY, GRAY
  - CYCLOALIPHATIC EPOXY, GRAY
  - HD ETP C11000 COPPER (CONDUCTOR), TIN PLATED

- SPECIFICATIONS:
- BASIC IMPULSE LEVEL ..... 30kV
  - CURRENT RATING ..... 800 TO 1100 AMPS
  - TEMPERATURE CLASSIFICATION ..... BIS-A: -40°C TO 120°C  
CYCLO: -40°C TO 105°C

ITEM NO.	QTY.	DESCRIPTION	EPC PART NO.	DIM "A"	DIM "B"	"H"
1	1	SPADE 4HL (EXT) COPPER	EPC10-023-000	10.25	6.375	4
2	1	SPADE 6HL (EXT) COPPER	EPC10-023-001	12.00	8.125	6
3	1	SPADE 8HL (EXT) COPPER	EPC10-023-002	13.75	9.875	8
4	1	SPADE 10HL (EXT) COPPER	EPC10-023-003	15.50	11.625	10
5	1	SPADE 12HL (EXT) COPPER	EPC10-023-004	17.25	13.375	12
6	1	SPADE 14HL (EXT) COPPER	EPC10-023-005	19.00	15.125	14
7	1	SPADE 16HL (EXT) COPPER	EPC10-023-006	20.75	16.875	16
8	1	SPADE 18HL (EXT) COPPER	EPC10-023-007	22.50	18.625	18
9	1	SPADE 20HL (EXT) COPPER	EPC10-023-008	24.25	20.375	20

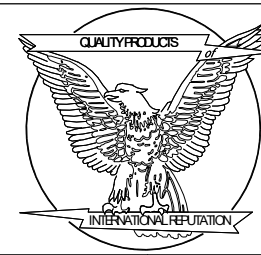
**PROPRIETARY AND CONFIDENTIAL**

THE INFORMATION CONTAINED IN THIS DRAWING IS THE SOLE PROPERTY OF H-J INTERNATIONAL, INC. ANY REPRODUCTION IN PART OR AS A WHOLE WITHOUT THE WRITTEN PERMISSION OF H-J INTERNATIONAL, INC. IS STRICTLY PROHIBITED.

**TOLERANCES (EXCEPT AS NOTED)**

ONE PLACE MM ±1.50  
TWO PLACE MM ±0.75  
TWO PLACE DEC. ±0.60  
THREE PLACE DEC. ±0.30  
FRACTIONS ± 1/16"  
ANGLES 2°

BREAK ALL SHARPS UNLESS OTHERWISE NOTED



**H-J INTERNATIONAL, INC.**  
3010 HIGH RIDGE BLVD, HIGH RIDGE, MO. 63049 USA  
PHONE 1-636-677-3421 FAX 1-636-376-1915

1.2 kV / 1100A  
SECONDARY BUSHING  
(COPPER CONDUCTOR)

DRAWING NO. 10-023-000

SCALE 1:2 SIZE B REV. 8 SHEET 1 OF 1

APPROVED BY	DB	DATE	5/18/1999
CHECKED BY	CJT	DATE	11/22/2013
DRAWN BY	DB	DATE	5/18/1999
TOOL NO.	T10-023		
PRODUCT GRP.	1000 SERIES		